



GROOVEMONKEE

PROFESSIONAL MIDI BEATS



INSPIRE YOUR MUSIC

groovemonkee.com

Finding the MIDI Files	2
Video Installation Tutorials	2
Mac Installers.....	2
PC Installers.....	2
Technical Support	2
Mappings and Formats	3
Abbey Road Drums	3
Ableton Live	3
Addictive Drums 1	4
Addictive Drums 2	5
Battery 3 and 4.....	6
Beat Buddy.....	6
BFD1.5.....	6
BFD2.....	6
BFD3.....	7
Cakewalk Session Drummer	8
Cakewalk Studio Instruments	8
Cubase.....	8
Eco (Fxpansion)	8
EZdrummer 1	9
EZdrummer 2	9
EZdrummer 3	10
FL Studio FPC.....	10
GarageBand.....	10
General MIDI (GM).....	10
Get Good Drums	10
Groove Agent 4	10
Groove Agent 5	10
IMAP	12
Logic	12
Ministry of Rock 2.....	12
MODO Drum	12
MT Power Drums	12
Ocean Way	12
Perfect Drums	12
ProTools Strike.....	13
Reason.....	13
Steven Slate Drums 3.5.....	13
Steven Slate Drums 4	13
Steven Slate Drums 5	14
Studio Drummer (Native Instruments)	15
Studio One	15
Superior Drummer 2.....	15
Superior Drummer 3.....	15
Groove Monkee Glossary	16
License Agreement	17

Finding the MIDI Files

All MIDI files are in the “Other MIDI mappings” folder. Please use the table of contents to help you find and install the files you need.

How do I find the files I need?

The document linked below shows how our folders link to specific apps:

https://bonzo.groovemonkee.com/resources/docs/Folder_to_Apps_Table.pdf

General MIDI Files

Most users only need the General MIDI mapped files (GM). You'll find them in the “Other MIDI mappings” folder inside the folder that ends with “GM”.

Mega Pack: the folders are stored within zip files. Example: “Mega Pack GM.zip”

Video Installation Tutorials

Our tutorial collection: <https://www.youtube.com/playlist?list=PLoKXq5l0Se1qT0EI2wOmOHfWDZ0fvZm0a>

Mac Installers

Sorry, our Mac installers have been discontinued due to Apple's ever changing security standards.

PC Installers

Our app installs the following formats ONLY:

1. Addictive Drums (versions 1 & 2)
2. BFD (v1.5 and v2)
3. EZdrummer 1 and 2, Superior Drummer 2
4. Expansion Eco

All other MIDI files are located in the “Other MIDI mappings” folder.

The files for EZdrummer and Superior 2 will be immediately available. **Other formats require additional action on your part. Please review the appropriate section of this file for additional details.**

IMPORTANT: Do **NOT** select a specific product's 'MIDI' or 'Grooves' folder as the target for the installer. If you do, ALL formats will be copied there! It's best to accept the default or create a “Groove Monkee” folder instead. **The installer will find the folders for the products installed on your system.**

The installer also creates an uninstaller in your “Applications” folder (inside a folder named “Groove Monkee”).

Technical Support

If you need technical assistance, please contact support@groovemonkee.com.

Mappings and Formats

Abbey Road Drums

Video installation tutorial: <https://youtu.be/zqfWCD3t2gs>

To install our MIDI loops into Abbey Road Drums, please follow these steps:

1. Find your Abbey Road MIDI folder(s). Each set has its own MIDI folder and each folder has 2 kit folders
2. Close Abbey Road Drums, if necessary
3. Copy our "Studio Drummer" MIDI folder into EACH Abbey Road KIT folder
4. Repeat for EACH Abbey Road set (1960s, 1970, etc) you have

Note: you'll find our "Studio Drummer" loops in the "Other MIDI mappings" folder of your download. They are NOT in the installer.

Example: You can find your Abbey Road Drums content folder by clicking on the gear-shaped icon for Additional Library Options. It will probably be in a location like this:

F:\Programs\Native Instruments\Content\Abbey Road Modern Drummer\MIDI Files

Sets and Kits

Modern Drummer is a "Set" and it has two kits. Each kit has a MIDI folder. Copy our folder into BOTH kit folders. Repeat for all your other Abbey Road sets (1960s, 1970s, etc).

Below: The Additional Library Options icon used to find your Content folder.



Ableton Live

The recommended files are inside the "Other MIDI Mappings" folder. They are not in the installer.

Try using our "GM mapped" loops with Live kits. Many but not all follow the GM standard.

We also have files mapped for older versions of Live "Session Drums". They're in the folder ending with "Live SD".

Note: These do NOT work with "Session Drums Studio".

Addictive Drums 1

After running our PC installer, the Groove Monkee MIDI files should be copied into your Addictive Drums User MIDI folder. Complete the installation as explained below.

IMPORTANT: Open Addictive Drums and click on the button marked 'Refresh Library'. It is located just below the 'Beats Folder' button. **If you don't complete this step you will not see our files in Addictive Drums!** (see below)



The new Groove Monkee beats should now appear with your other material. If not, please make sure that you've selected "User Library". If not, the new material will not be visible within Addictive Drums.

Troubleshooting

If the beats don't sound like they are mapped correctly check the category of the new material. If the category is 'N/A' then the files were not installed correctly.

Please contact support@groovemonkee.com if you need additional assistance.

Addictive Drums 2

Our PC installer works with Addictive Drums 2. See below for manual installation instructions.

After running the installer, open Addictive Drums. Then click “Refresh MIDI Library” in the Help [?] menu. (please see the image below)

Video tutorial for a manual installation: <https://youtu.be/RddbXlipyrc>

Manual Installation

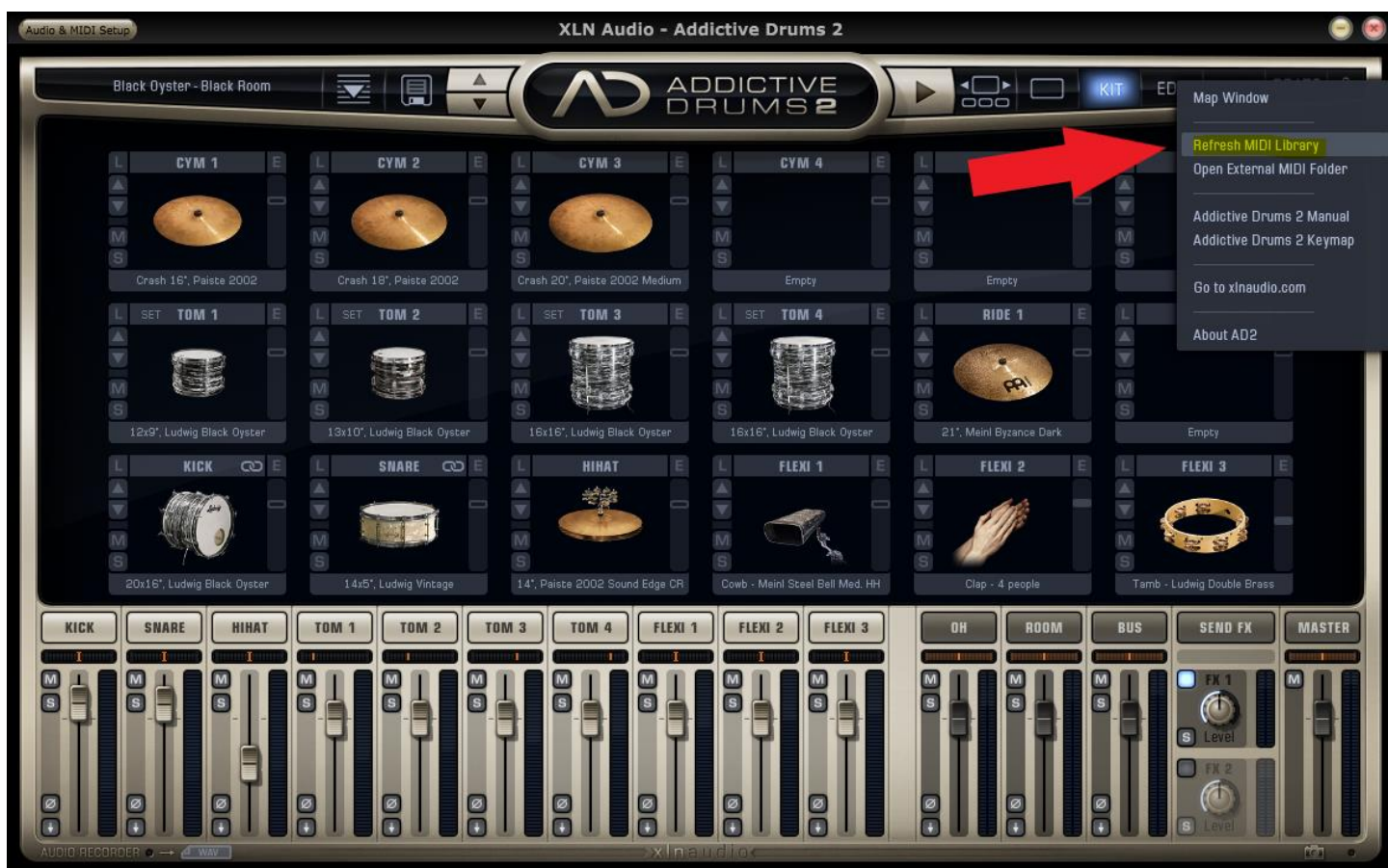
Note: Our AD files can be found in our “other MIDI mappings” folder. The folder has “AD” at the end.

1. Copy our Addictive Drums folder to your Addictive Drums 2 “External MIDI Files” folder.
2. Select “Refresh MIDI Library” from the Help Button [?] menu.

To access your “External MIDI Files” folder, click “Open External MIDI Folder in the “?” menu (right side of AD).

Windows example: Documents\Addictive Drums 2\External MIDI Files

Mac OS X example: <user>/Library/Application Support/Addictive Drums 2/External MIDI



Viewing the Loops in Addictive Drums 2

To view our loops in AD2, go to “Library” and you will see our packs listed under “external MIDI”. From there you can select either “all external MIDI” or a specific pack.

Battery 3 and 4

Please use our “GM” (general MIDI) “gm mapped” loops with Battery.

Battery Kits

We have Battery kits in the “extras” folder of your download. These kits will allow you to start working immediately with our GM Mapped loops (found in our “Other MIDI mappings” folder).

Beat Buddy

The Beat Buddy files are in the “Other MIDI Mappings” folder of your download. Look for the folder or zip file with “BB” at the end.

Installation Help

Installing a PBF file Blog Post – click [HERE](#)

Installing a PBF Video tutorial: <https://youtu.be/E6ykbz5TVA>

Creating your own PBF Video tutorial: <https://youtu.be/i-nfH7h03SI>

View all packs with PBF files: <https://groovemonkee.com/collections/beatbuddy-packs>

BFD1.5

PC Users

Our PC installer will copy the files to the appropriate location for you and you can open BFD and use the files immediately.

Mac Users

Beginning in February 2020, our new Mac installers no longer support BFD v1.5. If you need to install these files, please contact support@groovemonkee.com for assistance.

BFD2

IMPORTANT: If you've moved your BFD library, please read the section named “BFD2 Troubleshooting”.

After running our installer, complete the installation by scanning for new files. Do NOT attempt to add a path to our files!

1. Start BFD2 and open the “Preferences” page (it's the “checkbox” icon – please see the image below).
2. Click on the “Data” tab (left side - see the image below).
3. Press “Scan data paths for new files” (see the image below). Click “Yes” to confirm.

The new library should now appear in BFD2. You can search through our material using the same search criteria used for the factory grooves. Groove Monkee should now be listed as an “author” in the search window.

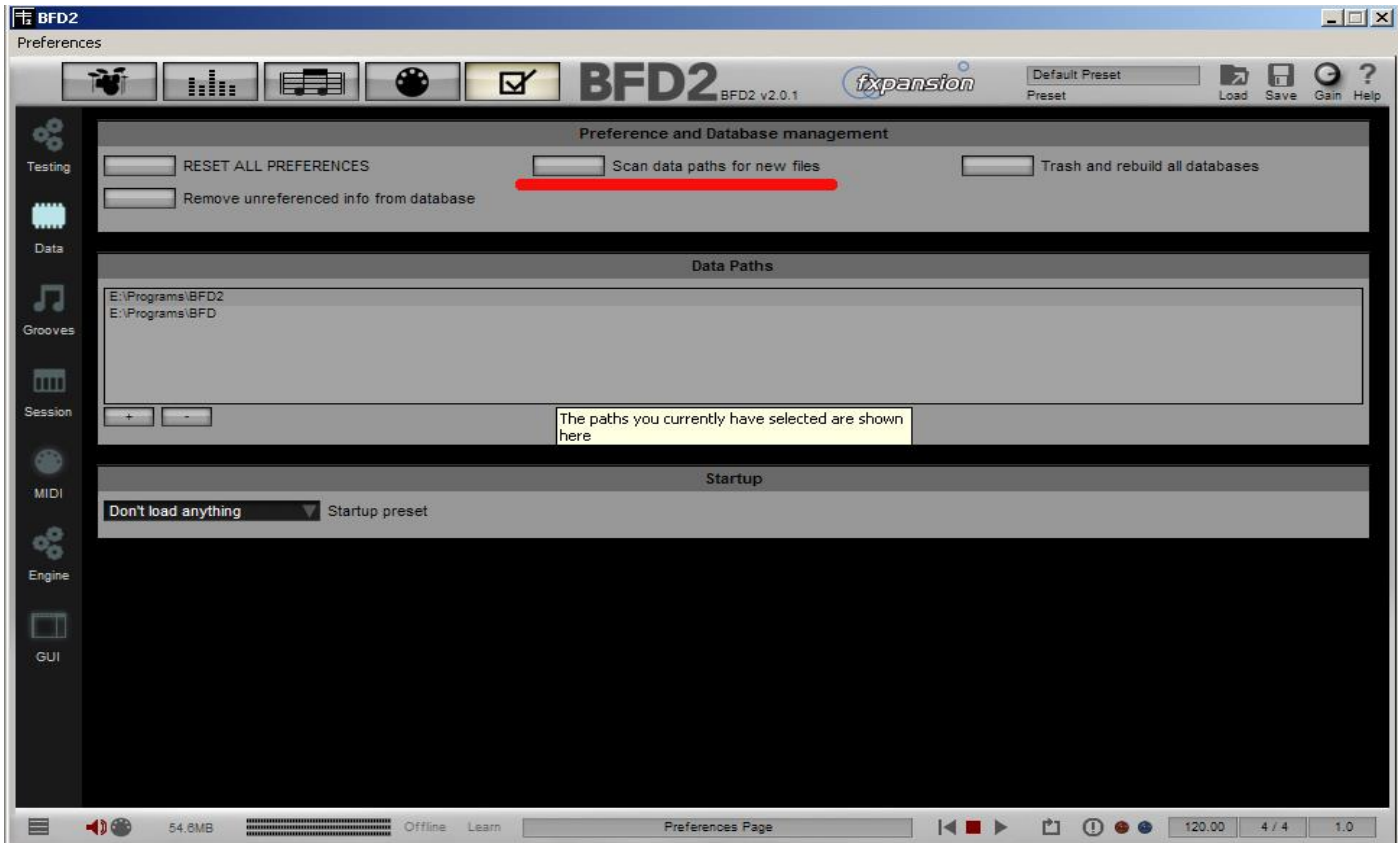
BFD2 Troubleshooting

If the grooves don't appear after running our installer and rescanning your database, try manually copying our BFD2 files into your **CURRENT** BFD2 “grooves” folder.

Tip: You can determine the current library location by examining your BFD2 Preferences (“Data Paths” on the Data tab).

Do NOT add a path inside BFD2 to the Groove Monkee loops! This will not work!

Note: If you've moved your BFD2 library after the initial installation, our installer may not find the new location. If not, you must perform a manual installation.



BFD3

Our BFD2 files are 100% compatible with BFD3. They are in the “Other MIDI mappings” folder of your download.

Installing the BFD2 files into BFD3:

1. Copy our BFD2 folder into your “Documents\FXpansion\BFD3\Grooves” folder
2. Tools menu > ‘Set up content locations’
3. Click ‘Rescan User Content Paths’

Video manual installation tutorial: <https://youtu.be/2oNIUjVRO6o>

Note: the video above uses a slightly different method. BFD3 actually has more than one possible content location.

Cakewalk Session Drummer

Video Installation and Usage tutorial: https://youtu.be/kUNs5Wfk_Bk

We have "groove clips" in the folder named "other MIDI mappings". It's the folder with "Session Drummer" in the name. They are **NOT** in the installer.

Copy this folder into your Sonar Session Drummer 3 Patterns\Groove Monkee folder. This folder is installed by Cakewalk's installer and contains some of our free grooves.

1. Open the Sonar browser (Views menu, Browser) and go to the media tab.
2. Select "Session Drummer 3 MIDI Drum Loops" from the drop down box. This displays the Groove Monkee folder.
3. Right Click on the Groove Monkee folder and select "properties".
4. Copy the "location" of the folder.
5. Paste this location into Windows Explorer's address bar and open the folder. Copy our folder inside.

Cakewalk Studio Instruments

These files are stored in folders with "Session Drummer" in the name. These files are in MIDI groove clip format and starting with Sonar 8 or Home Studio 7, you can preview and loop these files in the "Browser" window.

Cubase

Try using our "gm mapped" loops with Cubase. They should work with most the Cubase Groove Agent One kits.

Tutorials:

- <https://groovemonkee.com/blogs/blog/auditioning-midi-in-cubase-11>
- <https://groovemonkee.com/blogs/blog/easy-cubase-midi-auditioning>

Eco (Fxpansion)

Installation

Our installer should copy the grooves into your Eco "grooves" folder automatically. After running our installer, you need to rebuild your Eco database before you can use the new loops.

1. Start Eco
2. Click on the Eco preferences ("checkbox" icon)
3. Click "Rebuild Databases"

Manual Installation Instructions

If our installer fails, please follow these instructions.

1. Find your Eco "grooves" folder:
 - a. Open Eco
 - b. Click on the "option" menu (it is the "checkbox" icon)
 - c. Click on "set data path...." This shows you the location of your Eco "grooves" folder.
2. Copy our "Eco" folder into your Eco "grooves" folder.
3. Click on the Eco preferences
4. Click "Rebuild Databases"

Note: You'll find our Eco folder in the "other MIDI mappings" folder.

EZdrummer 1

Installation

Our video tutorial collection: <https://www.youtube.com/playlist?list=PLoKXq5l0Se1qT0EI2wOmOHfWDZ0fvZm0a>

Our installer automatically installs our loops for EZdrummer and Superior Drummer 2.

Manual Installation

Copy the folder inside our “Toontrack” folder into your EZdrummer “MIDI” folder. These files work for both EZdrummer and Superior. **Note:** You’ll find the “Toontrack” folder inside our “other MIDI mappings” folder.

EZdrummer 2

Our video tutorial collection: <https://www.youtube.com/playlist?list=PLoKXq5l0Se1qT0EI2wOmOHfWDZ0fvZm0a>

Our PC installer will automatically install our loops for EZdrummer and Superior Drummer 2. **If you have Superior 3, please perform a manual installation as described in the Superior 3 section.**

1. Close EZdrummer 2
2. Run our PC installer (it automatically finds your EZdrummer 2 MIDI folder)

Do NOT select your EZdrummer folder as the destination - the installer will find it!

Manual Installation

1. Find your Toontrack User MIDI folder:
 - a. click on the “Browser” tab
 - b. click on the “Show/hide User MIDI” button on the top right, just under “Menu”.
 - c. click the down arrow on the “User MIDI” folder
 - d. select “Open in Explorer” (or “Open in Finder”, if using a Mac)
2. Copy the product folder **inside** our “Other MIDI mappings\Toonrack” folder
3. Paste the product folder into your User MIDI folder

Note: You’ll find the “Toontrack” folder inside our “other MIDI mappings” folder.

To access manually installed files, click on the “Show/hide USER MIDI” button on the top right, just under “Menu”.



EZdrummer 3

For installation instructions, please see this post:

<https://groovemonkee.com/blogs/blog/how-to-install-midi-files-into-ezdrummer3-with-a-linked-folder>

FL Studio FPC

These files work with "FPC" or "Fruity Pad Controller", a software drum machine. They are stored in folders with "FPC" in the name. Please note that these kits do not follow a consistent mapping scheme. You may need to adjust either your kit mapping or the MIDI notes in some cases.

GarageBand

Try using our General MIDI (GM) loops with GarageBand. Most GarageBand kits generally follow the GM standard. Please note that MIDI loops do not appear in the GarageBand Loop browser window.

General MIDI (GM)

These loops follow the General MIDI mapping standard. These files are inside the "Other MIDI Mappings" folder. Use the folder or zip file with 'GM' at the end.

Get Good Drums

These files are in the 'Other MIDI Mappings' folder of your download. The GGD folders have 'GGD' at the end.

Note: For the Mega Pack, please use the individual folders inside the 'Mega Pack GGD' zip file.

Installing our MIDI files into GGD is just a simple copy and paste. Here are step by step instructions:

1. Find your GGD 'MIDIFiles' folder

Open Kontakt and press F1 to open the Browser window, if necessary
Select the 'Instruments' drop down arrow just beneath your GGD product
Click 'Open containing folder'

2. Copy & paste the Groove Monkee GGD folder(s) into your GGD 'MIDIFiles' folder

3. Close and reload the GGD instrument (if necessary)

The GGD instructions offer an alternative that involves doing a 'Save and re-batch' but it seems like overkill. Feel free to choose either method.

Tip: Bookmark the GGD MIDI Files folder location for faster access in the future.

Groove Agent 4

These files are in the 'Other MIDI Mappings' folder of your download. Use the folder or zip file with 'GA4' at the end. Detailed instructions for Groove Agent 4 can be found here: [GA4 Instructions.pdf](#)

Groove Agent 5

The files are in the "Other MIDI Mappings" folder of your download. Use the folder or zip file with 'GA4' at the end.

Finding your Groove Agent User folder

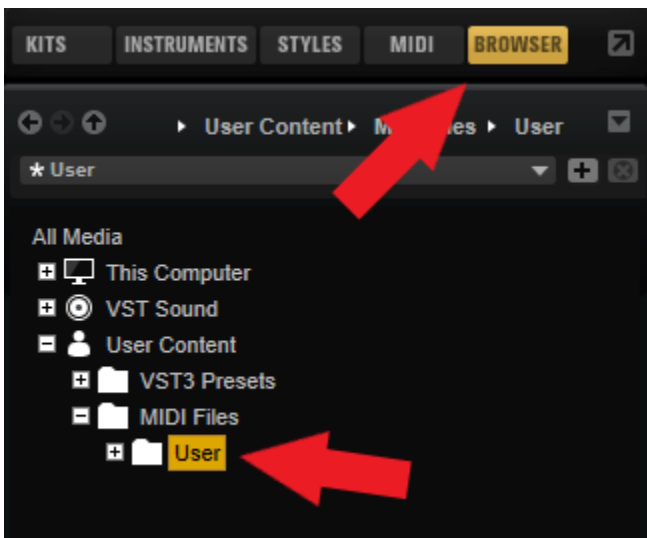
Open the Groove Agent 5 "Load Panel" by clicking the folder icon as shown in the image below.



After opening the 'Load Panel', please do the following:

1. Select the Browser tab (see below)
2. Open the 'User Content' folder
3. Open the 'MIDI Files' folder

Right click the 'User' folder to see options for opening it with Windows Explorer or Mac Finder. See the image below.



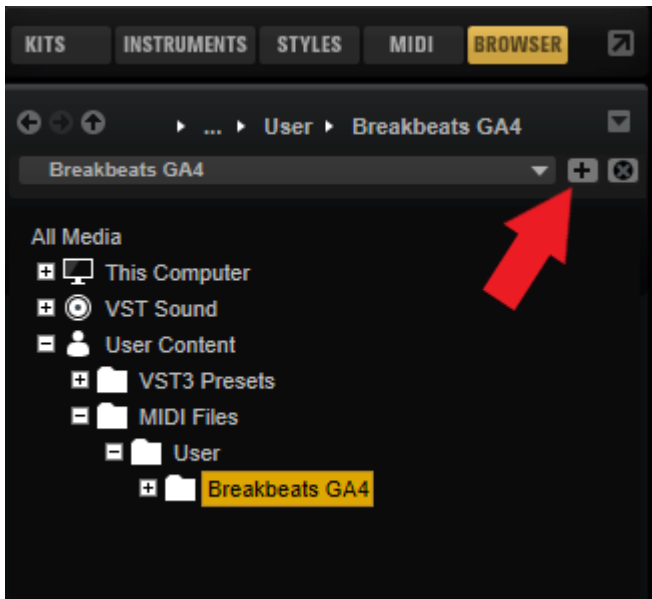
Copy the MIDI files

Copy our GA4 folder into your 'MIDI Files\User' folder. Groove Agent should recognize the new files almost immediately.

GROOVEMONKEE

Create a shortcut

For faster access, add the folder to your 'favorites'. Select the folder and click the '+' button shown in the image below. Alternatively, you can add the 'User' folder to your favorites and browse from there.



IMAP

The files are inside the "Other MIDI Mappings" folder. Use the folder or zip file with 'IMAP' at the end. They should work with any product that follows Sonic Reality's *IMAP* standard including "Ocean Way" drums.

Logic

Try using our General MIDI (GM) loops with Logic. Most Logic kits generally follow the GM standard. Please note that MIDI loops do not appear in the Logic Loop browser window.

Ministry of Rock 2

These files are inside the "Other MIDI Mappings" folder. Use the folder or zip file with 'MOR' at the end.

MODO Drum

The files are inside the "Other MIDI Mappings" folder. Use the folder or zip file with 'MODO Drum' at the end.

MT Power Drums

The files are inside the "Other MIDI Mappings" folder. Use the folder or zip file with 'MT PowerDrums' at the end.

Ocean Way

The files are inside the "Other MIDI Mappings" folder. Use the folder or zip file with 'IMAP' at the end. They should work with any product that follows Sonic Reality's *IMAP* standard including "Ocean Way" drums.

Perfect Drums

The files are in the "Other MIDI Mappings" folder. Use the folder or zip file that ends with "Perfect Drums".

ProTools Strike

Our "GM mapped" MIDI loops should work with Strike.

Helpful Hints

There are a couple things to keep in mind when using Strike:

- 1) put Strike into "Kit" mode
- 2) set the MIDI channel of your Pro Tools drum track to channel 2
- 3) mapping: Avid states that in kit mode, Strike "follows the General MIDI convention where applicable"

Reason

For consistent results, the easiest thing to do is use our GM mapped loops with the ID8 drum kits. You'll find the GM loops in your download's "Other MIDI Mappings" folder. Use the folder or zip file ending with "GM".

We have two other sets of loops to use with Reason. See <https://groovemonkee.com/blogs/blog/working-with-reason-kits>

1. NN-XT – these loops are designed to work with drum kits supplied as NN-XT kits. Please note that these kits do not follow a consistent mapping scheme. We mapped the grooves to work with most of the kits but since they're not mapped consistently, you may find that you need to adjust either your kit mapping or the MIDI notes.

These grooves are in the folder named "NN-XT Kits" or with "NN-XT" added at the end.

2. Drum Kits Refill – this collection of kits from Propellerhead Software is sold separately and is not part of Reason. These grooves are in the folder named "Drum Kits Refill" or with "DKR" added at the end.

Steven Slate Drums 3.5

These files are mapped for Steven Slate Drums 3.5. Version 4 requires a different set of loops (please see below). They are stored in folders with "SSD3.5" in the name.

Steven Slate Drums 4

Video installation tutorial: <https://youtu.be/jqYpffPiLJg>

The files are inside the "Other MIDI Mappings" folder. Find the folder or zip file with "SSD4" at the end.

Installation:

1. Close your host software (eg. Logic, Cubase, Sonar, etc.).
2. Move or copy our folder (ends with ".lib") into your SSD4 "Grooves" folder. This folder is located in the SSD4 "Library" folder. Do NOT move the Groove Monkee folder with "SSD4" at the end. Move the folder inside that ends with .lib!
3. Restart your host and the grooves should appear inside the groove player.

IMPORTANT: Make sure that you moved ONLY the folder(s) with .lib at the end!

Example: If you installed SSD4 in your "G:\Programs" folder, look for something like:
G:\Programs\SSD4\SSD4Library\Grooves.

IMPORTANT: SSD4 Kits don't always follow a consistent tom mapping. The kits have 2, 3 or 4 toms. They are not mapped consistently and there may be empty tom slots. For best results, you should manually fill all 4 tom slots, if necessary.

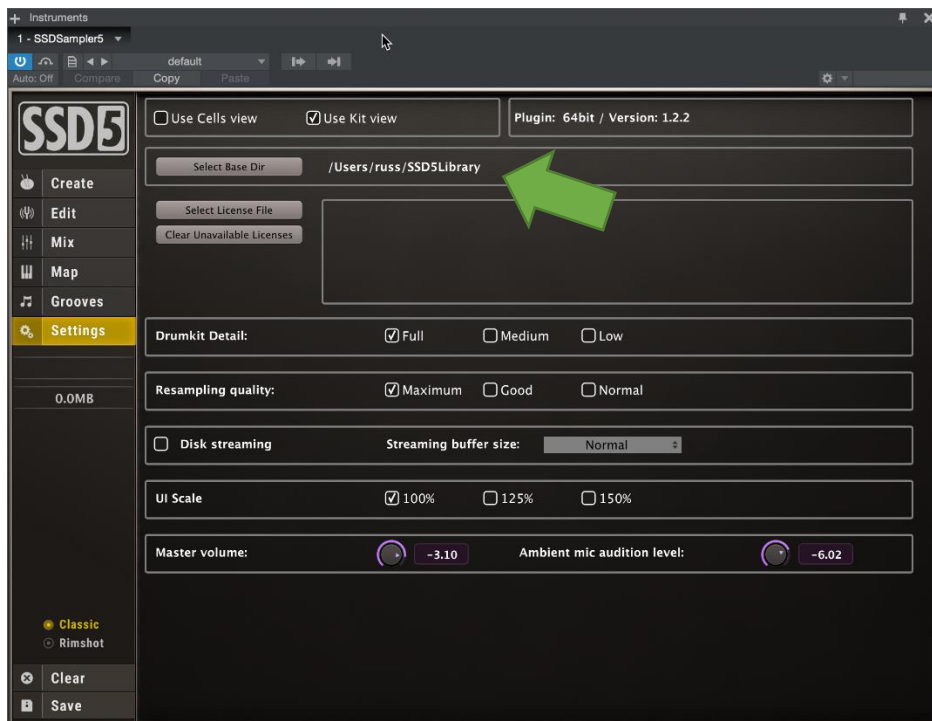
Steven Slate Drums 5

Video install tutorial: <https://youtu.be/7II3AMmYwYw>

1. Find your SSD5 Library folder

Find your SSD5 Library folder by looking at your SSD5 settings page.

The image below shows the location of your SSD5 base directory. It's on the settings page.



2. Find your SSD5 “Grooves” folder

The SSD5 Grooves folder is **inside** the "SSD5Library" folder.

Tip: Click "Select Base Dir" to open your SSD5Library folder.

3. Find the Groove Monkee SSD5 folder

Open the “Other MIDI Mappings” folder of your download. Look for the folder or zip file that ends with “SSD5”. Inside, you’ll find a folder or folders that end with “.lib”.

4. Install the MIDI Files

1. Close SSD5, if necessary
2. Copy our .lib folder into your SSD5 “Grooves” folder
3. Restart SSD5

Troubleshooting: If the grooves don’t appear after restarting SSD5, make sure that:

1. The folder you installed ends with .lib
2. You’ve installed our files into your SSD5 “Grooves” folder

Studio Drummer (Native Instruments)

Video installation tutorial: <https://youtu.be/-Ymxc2K1f8g>

The files are inside the “Other MIDI Mappings” folder. Use the folder or zip file with “Studio Drummer” at the end.

Installation

Copy our Studio Drummer folder into your ‘Studio Drummer Library\MIDI Files’ folder. These files work with the **default** Studio Drummer kit mappings.

Studio One

Try using our GM mapped loops with Studio One. The files are inside the “Other MIDI Mappings” folder. Use the folder or zip file with “GM” at the end. Check our blog for posts about using MIDI in Studio One versions 4 and 5.

Superior Drummer 2

Our installer will automatically install our loops for Superior Drummer.

1. Close Superior Drummer
2. Run our installer – it will find the Superior “MIDI” folder.

PC Users: Do NOT select your “MIDI” folder as the destination!!

Manual Installation

If the installer fails, here’s how to manually install the loops.

- Find your Toontrack MIDI folder:
 - **Windows example:** C:\Program Files (x86)\Common Files\Toontrack\EZDrummer\MIDI
 - **Mac OS X example:** Library\Application Support\EZdrummer\MIDI
- Copy the product folder **inside** our “Other MIDI mappings\Toontrack” folder
- Paste the product folder into your Toontrack MIDI folder

Note: You’ll find the “Toontrack” folder inside our “Other MIDI mappings” folder.

Superior Drummer 3

We now recommend a manual installation using a “linked folder”. Please see this blog post for instructions:

<https://groovemonkee.com/blogs/blog/how-to-install-midi-files-into-superior-drummer-3-with-a-linked-folder>

To find our Toontrack files, open your product folder and then open the 'Other MIDI Mappings' folder.

Look for the folder that ends with 'Toontrack'. Example: 'Blues Toontrack'

For individual packs, install the folder inside of our 'Toontrack' folder.

For our Mega Pack, install the folder named 'Mega Pack Toontrack'. This is stored as a zip file so you'll have to extract it first.

GROOVEMONKEE

Groove Monkee Glossary

Here's a list of terms and abbreviations you'll find in our file names.

075 – Three numbers at the beginning indicate the file's recommended tempo. This example would be 75 bpm.

2x – Double time; Typically, this is a groove with snare hits on every "upbeat". Counted as "one AND two AND three AND four AND" with snare hits on each "AND".

8ths or 8th – usually refers to the hi-hat or ride pattern that is played as 8th notes.

16ths - usually refers to the hi-hat or ride pattern that is played as 16th notes.

42TF – Four on the floor; a kick on each beat and counted as "ONE, TWO, THREE, FOUR" in 4/4 time.

BB – Backbeat; Snare hits on two and four and very common in popular music like rock, pop, etc.

Crashes – We use this to mean crash cymbals instead of the hi-hat.

Displaced – Instead of snares on beats 2 and 4 (backbeat), one of the snares is moved (displaced) by an 8th or 16th. For example, the groove might have the snares on beat 2 and the upbeat of 4 ("4 AND").

F1 - F1, F2, F3 etc. indicates Fill 1, Fill 2, etc. This tells you that the loop has a drum fill at the end. Our fills typically get longer as the number increases.

4-Feel – Snare hits on each quarter note in 4/4; often called "double time".

FT – Floor Tom; We use this to mean the floor tom is used to keep time instead of the hi-hat or ride.

HT – Half-Time; Instead of snares on beats 2 and 4 (backbeat) the snare is played on beat 3 only.

HFT – Half-Time feel; a backbeat with 16th hat or ride, straight or shuffled.

Hybrid – An 8 bar groove that changes feel every 2 or 4 bars. For example, the first 4 bars might have a "half-time" feel with a backbeat thereafter.

Mixed - We use this to mean a groove with both snare and toms. For instance, a backbeat groove with a snare on beat 2 and a floor tom on beat 4.

OH – Open Hi Hat.

QTR – Quarter notes; We use this to mean a hi-hat or ride pattern played on every beat and counted as "ONE, TWO, THREE, FOUR".

Ride - We use this to mean the ride cymbal is used to keep time instead of the hi-hat.

Shank – the thicker part of the stick is playing the edge of the hi-hat for a heavier sound.

Single BB – a snare on 2 OR 4 but not both.

Stick – Typical in ballads or lighter feels, the snare is played to sound like a wood block or clave. Others may refer to this as a "cross stick" or "rim shot".

Trips – a groove based on 16th note triplets.

Var – is short for variation

License Agreement

The purchaser of this product license may use the contents in their own commercial and noncommercial compositions and releases with no additional costs.

The copyright of Groove Monkee products and all included MIDI files, audio files and/or audio demos, is retained by Groove Monkee, and is licensed to the purchaser (via paid download) for use in commercial and non-commercial music releases. Only purchasers of this product/license from Groovemonkee.com, or authorized distributors, have the legal right to use the contents in their own "original" musical releases and/or in advertisements, soundtracks, and television or film music productions. All rights not expressly granted to the user are reserved.

The contents of this product may not be used (wholly or partly) in the creation of any competitive product, including but not necessarily limited to: Sample Packs, Sample CDs, Sample DVDs, Virtual Instruments, Expansion Packs, drum loop applications (Mobile or otherwise), or in any other collection or service, in any format, or in any product that would involve the re-licensing of Groove Monkee' product copyrights, without our permission.

The contents of this product are not to be used "isolated" in your musical works. They must be used within the context of a musical piece mixed with additional parts. Any audio demos are provided as "demos" and they are not licensed to you, and they may not be re-created or used in their current state. You may not re-sell this collection or transfer it to a third-party, as a purchased license is a single-user license and non-transferable.

All copying, lending, duplicating, re-selling, renting, uploading, file sharing or unauthorized trading of this content (or any part of this content) is prohibited by international copyright law.

If you have any questions about our product licensing, please contact sales@groovemonkee.com.